



HYDRAULIC 4-POST LIFT

COMBI LIFT

ONE FOR ALL, ALL IN ONE



STURDY AND PRECISE

- ✓ For repair, tire service and reliable wheel alignment
- ✓ Numerous accessories available
- ✓ Flat runways with short access ramps
- ✓ Silent oil-submerged power unit

4000 KG | 5000 KG | 6500 KG | 8000 KG

HYDRAULIC 4-POST LIFT

COMBI LIFT

A lift that will suit all your needs

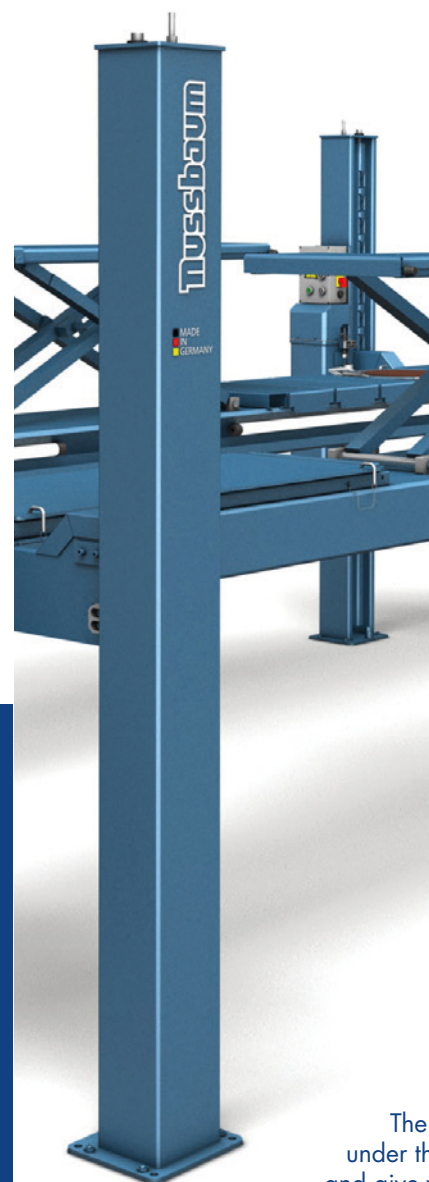
You want to make repairs, wheel alignment, or tire service?

You want a lift that can have it all?

The COMBI LIFT exists in different versions and one is made for you. German made quality for a reliable work on passenger cars and transporters.

Reliable

- ✓ Powered by 1 hydraulic cylinder made by NUSSBAUM
- ✓ High capacity power unit with a submerged motor installed on the control column
- ✓ Control panel with push-button operation
- ✓ High precision in every locking position, locking position every 100 mm
- ✓ Level runways (Versions: STANDARD, AMS, PLUS AMS)
- ✓ Roller bearing slip plates for wheel-alignment

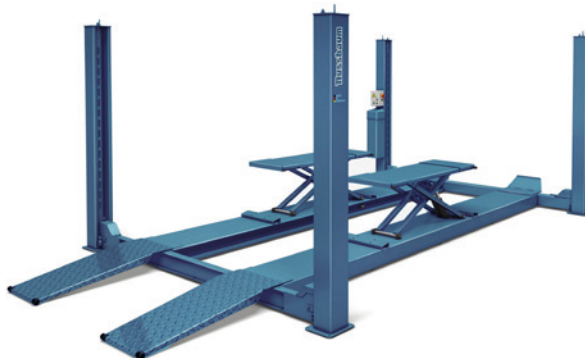


The
under th
and give

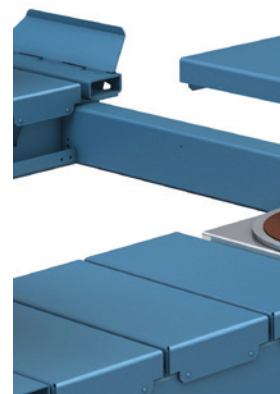
COMBI LIFT 4000, 5000, 6500 AND 8000: WE OFFER THE RIGHT CAPACITY FOR ANY WORKSHOP



COMBI LIFT standard with flat runway



COMBI LIFT PLUS with wheel-free lift
powered by hydraulic HyperFlow® technology



COMBI LIFT AMS
Runway with recesses for turntables

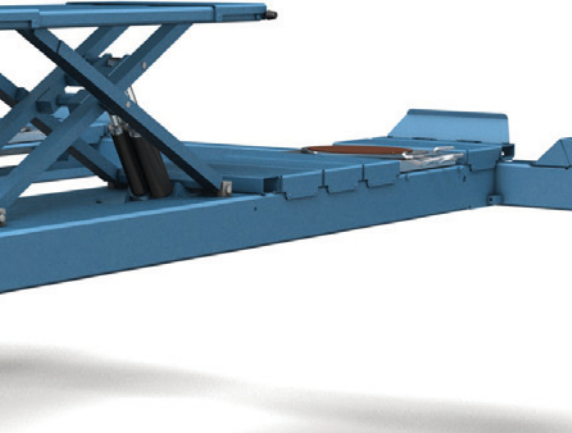


3 accessories that will help you get everything out of your COMBI LIFT

Our **axle jack** JACK 2000 and JACK 2500, or our LASER JACK allow you to lift the vehicle wheel free at the axle.

Add our **lighting set** running along the whole runway, and your working comfort is complete. We offer joint **play detectors** with integrated control buttons on the control torch for all models up to the COMBI LIFT 4.65.

Further accessories for wheel alignment are available.



Free floor

Lack of cables or connections
The lift allow for free movement
You space for your equipment

PLUS

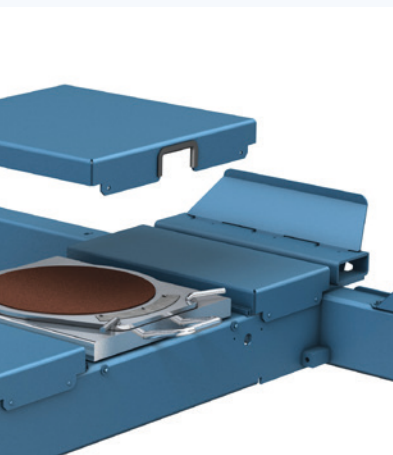
Runway with adjustable wheel free lift with patented HyperFlow® technology

AMS

Runway with wheel alignment set consisting of rear slide plates and front recesses for turntables

PLUS AMS

Runway with wheel-free lift and wheel alignment set



in front and sliding plates in the back

YOUR BEST ALLY FOR WHEEL ALIGNMENT (AND EVERYTHING ELSE)

- Always precise
- Many options and accessories available
- Comes in 4 weight classes, from 4 to 8 tons



CHOOSE YOUR COMBI LIFT

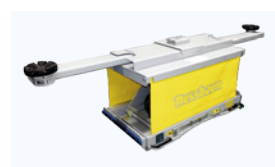
COMBI LIFT	4.40 S	4.50 H	4.65 H	4.80 H
Lifting capacity (kg)	4500*	5000	6500	8000
Lifting/lowering time approx. (sec)	40/35	35/35	41/36	45/35
Lifting height (mm)	1976	1980	1980	1800
Lifting height AMS (mm)	2008	2030	2030	-
Runway length (mm)	4830	5540	5540	6000
Runway width (mm)	500	670	670	670
Distance between runways (mm)	834-984	830-930	830-930	800-1200
Drive-on height (mm)	160	190	190	217
Drive on height Version AMS (mm)	210	240	240	-
Drive on height Version Wheel free lift (mm)	210	240	240	-
Total height column (mm)	2162	2320	2320	2328
Total length (mm)	6150	6965	6965	7800
Motor (kW)	3	3	3	3
Power supply (V/Hz)	400/50	400/50	400/50	400/50

***Please note:** With the optional wheel free lift, the lifting capacity of COMBI LIFT 4.40 S is reduced to 4000 kg

ACCESSORIES



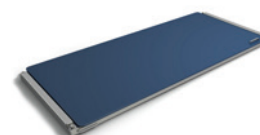
JACK 2000/2500



LASER JACK



Lighting 4 tubes, fluorescent or LED



Sliding plate for alignment



Play detector with remote control

More accessories available

WHEEL FREE LIFT (VERSION PLUS & PLUS AMS)	4.40 S	4.50 H	4.65 H
Lifting capacity wheel free lift (kg)	3000	3500	3500
Lifting/lowering time wheel free lift (sec)	15/5	12/8	12/8
Lifting height wheel free lift (mm)	525	440	440
Platform length wheel free lift (mm)	1530-1900	1550-1900	1550-1900

Techn. changes and errors excepted. | Valid from 05 2017 © Otto Nussbaum GmbH & Co. KG | Korker Strasse 24 | 77694 Kehl-Bodersweier | Germany
Tel.: +49 (0) 7853 899 – 0 | Fax: +49 (0) 7853 8787 | info@nussbaum-group.de | nussbaum-group.de



NUSSBAUM GROUP is a family owned business from Kehl am Rhein in Germany. For more than 40 years we produce our products exclusively in Germany. Every unit is controlled and thoroughly tested before leaving our facility. We are proud to be one of the world's leading manufacturers of automotive lifts and workshop equipment.



facebook.com/nussbaumgroup



youtube.com/nussbaumgroup

**Made
in
Germany**